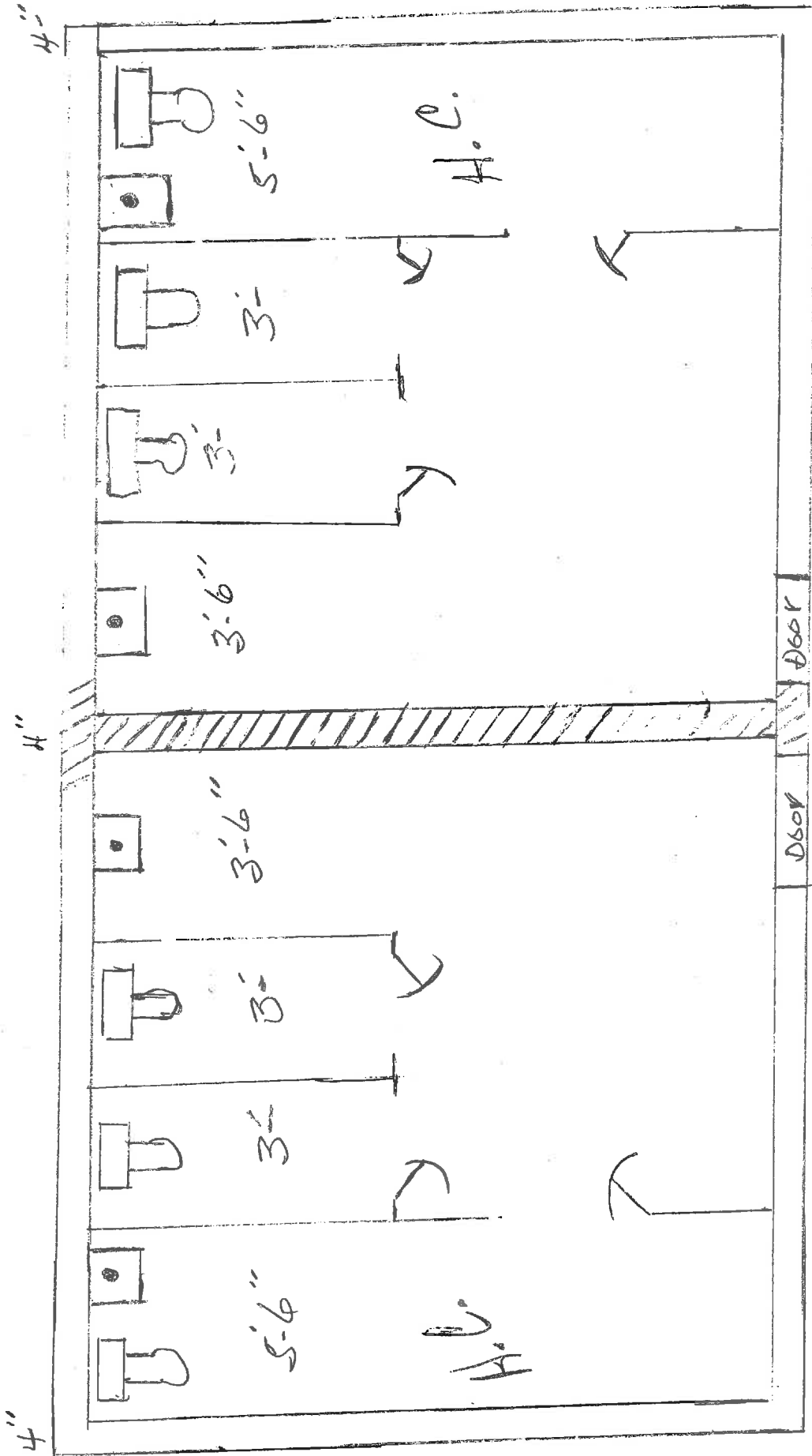


CITY OF PERRY, FLORIDA BLOCK BATHROOM BUILDINGS

The City of Perry is taking bids on two (2) complete restroom buildings; containing Men's and Women's sections, one on each side of the Rosehead Park Lake, per Florida Building Code. Bids will be evaluated on experience in similar jobs, quality of materials and work, and price. Preference will be given to bidders with demonstrated experience in the construction of similar structures. The bid will be awarded to the vendor with the best overall bid submission, determined above, in the sole discretion of the City. The City reserves the right to reject all bids. Sealed bids must be received by noon, local time, Friday, April 8, 2016. Late bids will not be accepted. Bids will be opened in the City Council room at 2 p.m., Friday, April 8, 2016. Construction to start in approximately 3-6 months and to be coordinated with the general contractor of the park construction.

Specifications:

- Restrooms to meet all ADA requirements.
- Entire structure to meet Florida Building Code to 120 mph wind load.
- All walls to be concrete block
- Inside walls to be finished block work.
- Center partition framed up to roof deck.
- Two (2) coats of paint, inside and out, must be Sherwin Williams, color to be picked by the City of Perry.
- All exterior block covered with Hardi Board or equivalent.
- All block work, lintels and fill cells per Florida Building Code.
- Roof to be Hip Roof, with trusses on 2 ft. centers; with 5/8 plywood, 30# felt, 30 year shingles, 2 x 6 treated Frica Board, eaves to be open, shingles to be Owens Corning Oakridge, GAF Timberline-HD or equal; shingles to be architectural grade and must math the Grand Pavilion. Ridge venting on roof.
- 12" high wall with studs on 6" centers on top of lintel "All Around Top" for light and vents.
- Restrooms will be 14' wide and 32' long.
- Toilet partitions material wood preference.
- Includes all accessories, toilet paper holders, paper towel holders, soap dispensers, diaper changing tables, grab bars, signs, and locks for all doors.
- Fixtures to be American Standard; fixture count 12 toilets; Faucets to be Delta, fixture count 8 lavatory.
- All plumbing pipe to be roughed in thru the back wall and covered with a chase wall.
- Two (2) lights at each restroom.
- Provide multiple written references of completed work on similar structures
- Provide written warranty on workmanship and materials



14' x 33'
New Size

